

The autonomous powder fire extinguishing device



■ About FINFIRE



The autonomous powder fire extinguishing devices "SPHERE", "TAB" and "KUPOL" are used as a primary means of extinguishing fires.

The devices are triggered automatically by fire, they are completely autonomous, their use does not require human presence, and for installation - no special sensors or complex installation.

The simple design of the device does not require special skills or great physical effort when using it, and there is no need to approach the source of the fire, which allows FINFIRE to be used by untrained people.

By equipping your premises with FINFIRE, you reduce the risk of fire spreading several times.

[Watch FINFIRE video](#)



■ Fire classes

FINFIRE are used to extinguish fire classes



Class A
Solid combustibles



Class B
Flammable liquids
or melting solid
combustibles



Class C
Flammable gases



Class E
Combustible parts
of electric
installations with
the voltage under
1000 V

■ Application areas



Buildings,
apartments



Agricultural
buildings,
cottages



Public places



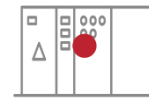
Stores



Gas and oil
refining stations



Railway
transport



Control
Dispatch
points



Garage premises



Cable shafts,
electric stations



Sea and river
transport



Automobile
transport



Oil and gas
production



Storage and
production
facilities



Electric
transport



Aviation and
armored
vehicles



Radio and television
equipment,
computers

- Are made from



FINFIRE "SPHERE", "TAB" and "KUPOL" consist of a polystyrene (foam) case with fire extinguishing powder inside.

The fuse cords run along the surface of the case, which are connected to a spray cartridge.

- The devices are triggered by contact with an open flame.
- False alarms are excluded.
- The devices are safe for humans and animals.
- Do not contain harmful substances.

■ Operating principle of the device



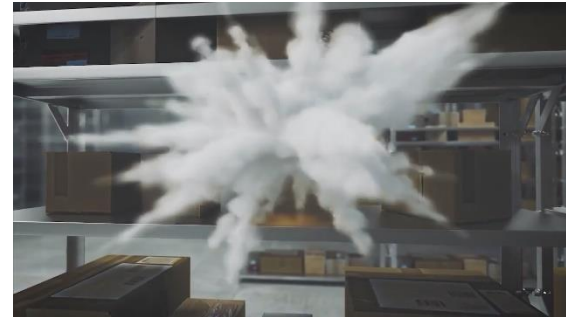
1. Fire outbreak



2. Fire hits FINFIRE



3. The fuse cords running along the surface of the housing activate the spray cartridge inside the device



4. After activation, the device body is destroyed and fire extinguishing powder is sprayed to extinguish the fire

■ Advantages



They are triggered automatically by fire without human intervention



Instantly extinguishes fire (in 3-10 sec.)



Protects volume up to 5 m³



Easy to use – does not require special skills



Maintenance free



Notifies when triggered by a clap (118 dB)



Safe for humans, animals and the environment



Long service life - 5 years



Made in Russia

■ Device certificate

ЕВРАЗИЙСКИЙ ЭКОНОМИЧЕСКИЙ СОЮЗ

СЕРТИФИКАТ СООТВЕТСТВИЯ

№ ЕАЭС RU C-RU.ЧС13.В.00867/23
Серия RU № 0414183

ОРГАН ПО СЕРТИФИКАЦИИ «ПОЖТЕСТ» ФГБУ ВНИИПО МЧС России
Федеральное государственное бюджетное учреждение «Всероссийский ордена «Знак Почета» научно-исследовательский институт противопожарной обороны Министерства Российской Федерации по делам гражданской обороны, чрезвычайным ситуациям и ликвидации последствий стихийных бедствий», место нахождения: 143003, РОССИЯ, МОСКОВСКАЯ ОБЛАСТЬ, Г. БИЛЫЙСОЛ, д. 12, регистрационный номер RA.RU.104С13 от 04.05.2015, телефон: +7 495 524 5151; +7 495 524 9193, адрес электронной почты: roff@vniipo.ru

ЗАЯВИТЕЛЬ ОБЩЕСТВО С ОГРАНИЧЕННОЙ ОТВЕТСТВЕННОСТЬЮ «СТРАДА»
место нахождения: 613048, РОССИЯ, ЮРЬЕВСКАЯ ОБЛАСТЬ, Г. ИРЬОВО-ЧЕПЕЦК, УЛ. ПРОИЗВОДСТВЕННАЯ, Д. 6, ОГРН 1074312001444, телефон +7 8332761534, e-mail: strada-kcc@kcc.ru

ИЗГОТОВИТЕЛЬ ОБЩЕСТВО С ОГРАНИЧЕННОЙ ОТВЕТСТВЕННОСТЬЮ «СТРАДА»
место нахождения: 613048, РОССИЯ, ЮРЬЕВСКАЯ ОБЛАСТЬ, Г. ИРЬОВО-ЧЕПЕЦК, УЛ. ПРОИЗВОДСТВЕННАЯ, Д. 6, ОГРН 1074312001444, телефон +7 8332761534, e-mail: strada-kcc@kcc.ru

ПРОДУКЦИЯ Устройства порошкового пожаротушения автономные «СФЕРА», «ТАБ», «КУПОЛ» по ТУ 28.29.22-032-98484583-2022 «Устройства порошкового пожаротушения автономные «СФЕРА», «ТАБ», «КУПОЛ». Технические условия
Серийный выпуск

КОД ТН ВЭД ЕАЭС 8424 10 000 0

СООТВЕТСТВУЕТ ТРЕБОВАНИЯМ ТР ЕАЭС 043/2017 «О требованиях к средствам обеспечения пожарной безопасности и пожаротушения»

СЕРТИФИКАТ СООТВЕТСТВИЯ ВЫДАН НА ОСНОВАНИИ
Отчет о сертификационных испытаниях № 0814ТР выдан 20.12.2023
испытательной лабораторией ИП НИЦ ПТ и СП ФГБУ ВНИИПО МЧС России, RA.RU.21М401.
Акт о результатах анализа состояния производства № 18526 от 21.08.2023
ОС «ПОЖТЕСТ» от ФУ ВНИИПО МЧС России, RA.RU.104С13.
Эксперты-аудиторы Васильев Григорий Николаевич, Карпов Алексей Павлович.
Схема сертификации: 1с

ДОПОЛНИТЕЛЬНАЯ ИНФОРМАЦИЯ Технические решения ТР 001/2022 «Устройства порошкового пожаротушения автономные «СФЕРА», «ТАБ», «КУПОЛ» по ТУ 28.29.22-032-98484583-2022» (раздел 4).
Условия и сроки хранения, срок службы (годности) указаны в эксплуатационной документации.
Сертификат распространяется на продукцию, изготовленную с 17.08.2023 (дата изготовления отобранных образцов, прошедших испытания).

СРОК ДЕЙСТВИЯ С 21.12.2023 ПО 20.12.2028
ВКЛЮЧИТЕЛЬНО

Руководитель (уполномоченное лицо) органа по сертификации
Эксперт (эксперт-аудитор) (эксперты (эксперты-аудиторы))

Мисина Елена Николаевна (И.О.)
Власов Сергей Владимирович (И.О.)

Certified by The Federal State Budgetary Institution "The Research Institute of Fire Protection of All-Russian Order "Badge of Honor" of the EMERCOM of Russia"

■ No analogues



FINFIRE "TAB" and "KUPOL" have no analogues.

They are our own development of our plant's specialists.

A special feature of the devices is their unique mounting method - this is a specialized heat-resistant tape located on the back side, with the help of which the devices can be attached to any flat surface.

The compact design allows you to install them in the most hard-to-reach places.



■ Patent



FINFIRE devices are patented:
Patent for utility model No. 184841.

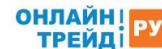
■ Our partners



FERRERO
ROCHER



KERAMA MARAZZI



DOORHAN®



■ Technical characteristics

Параметры	FINFIRE "SPHERE"	FINFIRE "TAB"	FINFIRE "KUPOL"
Quick action time	up to 10 sec.	up to 10 sec.	up to 10 sec.
Protected volume	up to 5 m ³	up to 5 m ³	up to 5 m ³
Dimensions (LxWxH)	150x150x150 mm ± 2%	150x150x50 mm ± 2%	150x150x80 mm ± 2%
Weight of the device	1400 g ± 10 g	560 g ± 7 g	660 g ± 7 g
Extinguishing powder weight	1340 g ± 10 g	500 g ± 7 g	600 g ± 7 g
Working temperature range*	from -50°C to +60°C	from -50°C to +60°C	from -50°C to +60°C
Activation sound	no more than 118 dB	no more than 118 dB	no more than 118 dB
Operating mode	autonomous	autonomous	autonomous
Ecology	friendly	friendly	friendly
Service life	5 years	5 years	5 years

*In places where FINFIRE is stored and installed, air humidity should not exceed 80%

■ Equipment of devices



FINFIRE "SPHERE" is supplied in individual packaging with a universal mount.

Equipment:

- The autonomous fire extinguishing device FINFIRE "SPHERE" 1 pc.
- Bracket (multipurpose fastener) 1 pc.
- Datasheet/manual 1 pc.
- Set of hardware for mounting the device 1 pc.
- Packing (box) 1 pc.



FINFIRE "TAB" is supplied in individual packaging with fastening using specialized double-sided tape.

Equipment:

- The autonomous fire extinguishing device FINFIRE "TAB" 1 pc.
- Datasheet/manual 1 pc.
- Packing (box) 1 pc.



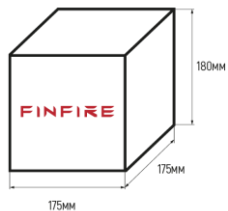
FINFIRE "KUPOL" is supplied in individual packaging with fastening using specialized double-sided tape.

Equipment:

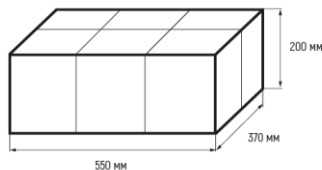
- The autonomous fire extinguishing device FINFIRE "KUPOL" 1 pc.
- Datasheet/manual 1 pc.
- Packing (box) 1 pc.

■ Package dimensions

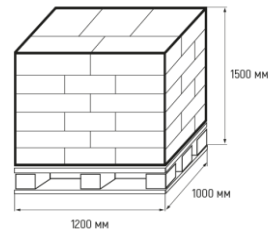
FINFIRE "SPHERA"



Individual packaging
Package size: **175 x 175 x 180 mm**
Gross weight: **1,75 kg**

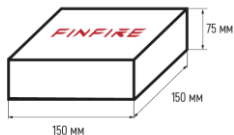


Set packaging: **6 pcs**
Package size: **542 x 362 x 193 mm**
Gross weight: **10,6 kg**

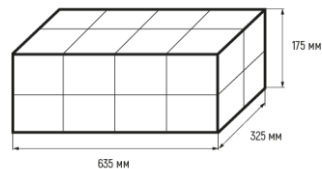


Pallet: **210 pcs (35 boxes)**
Pallet size: **1200 x 1000 x 1500 mm**
Gross weight: **370 kg**

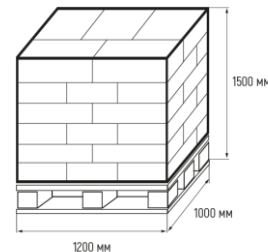
FINFIRE "TAB"



Individual packaging
Package size: **150 x 150 x 75 mm**
Gross weight: **0,65 kg**

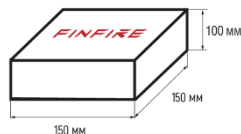


Set packaging: **16 pcs**
Package size: **630 x 320 x 165 mm**
Gross weight: **10,5 kg**

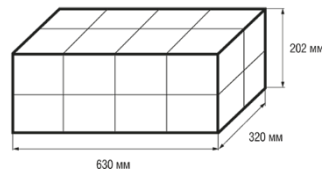


Pallet: **448 pcs (28 boxes)**
Pallet size: **1200 x 1000 x 1500 mm**
Gross weight: **295 kg**

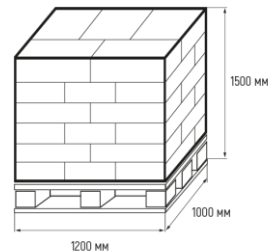
FINFIRE "KUPOL"



Individual packaging
Package size: **150 x 150 x 100 mm**
Gross weight: **0,75 kg**



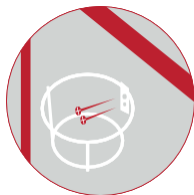
Set packaging: **16 pcs**
Package size: **630 x 320 x 202 mm**
Gross weight: **12 kg**



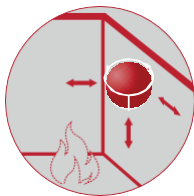
Pallet: **448 pcs (28 boxes)**
Pallet size: **1200 x 1000 x 1500 mm**
Gross weight: **336 kg**

■ FINFIRE "SPHERE". Instructions for use

Automatic mode:



To install the device, place the fastener so as the larger circle diameter faces up.



1. Place the device at a distance of up to 30 cm from the top or side above the place of high risk of fire.

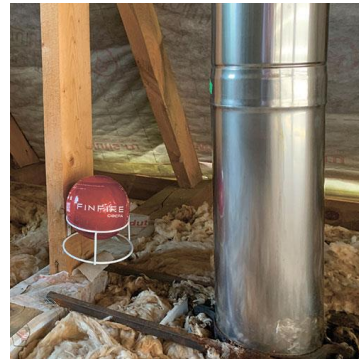


2. Secure the device with a universal mount. Make sure that the arrow on the device is pointing down.



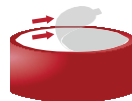
3. Upon contact with fire, the device automatically activates with a warning pop and sprays fire extinguishing powder onto the source of the fire.

■ FINFIRE "SPHERE" Installation

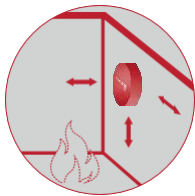


■ FINFIRE "TAB". Instructions for use

Automatic mode:



From the back of the device, it is necessary to peel off the protective film of double-sided tape and attach it to the object of protection with it.



1. Place the device at a distance of up to 30 cm from the top or side above the place of high risk of fire.

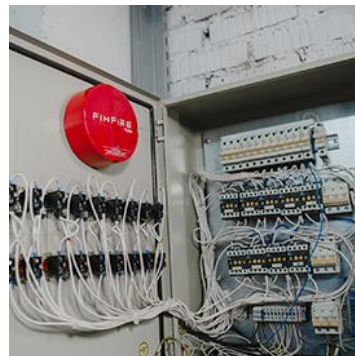
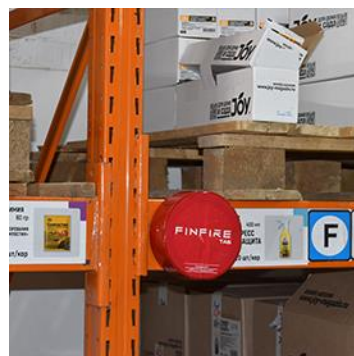
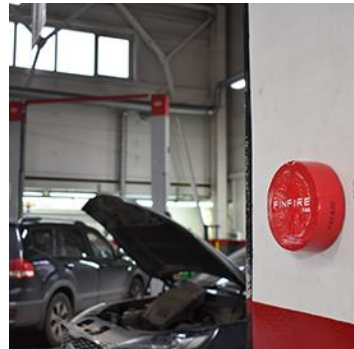
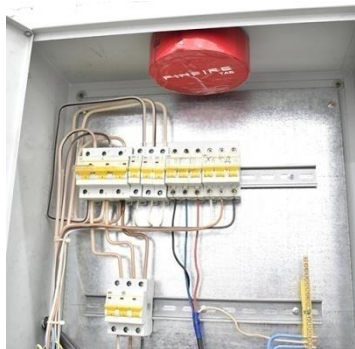


2. Secure the device with a double-sided adhesive tape on a flat and dry surface.



3. Upon contact with fire, the device automatically activates with a warning pop and sprays fire extinguishing powder onto the source of the fire.

■ FINFIRE "TAB" Installation



■ FINFIRE "KUPOL". Instructions for use

Automatic mode:



From the back of the device, it is necessary to peel off the protective film of double-sided tape and attach it to the object of protection with it.



1. Place the device at a distance of up to 30 cm from the top or side above the place of high risk of fire.

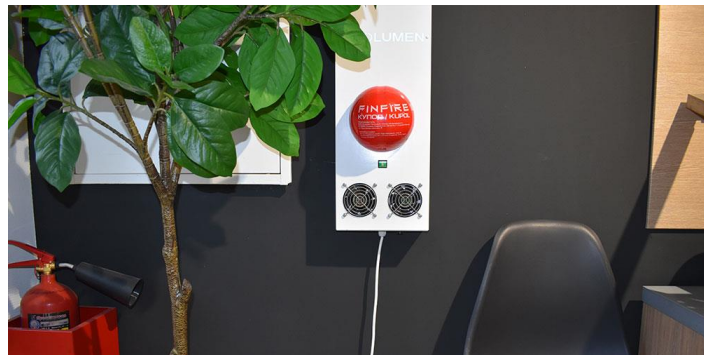
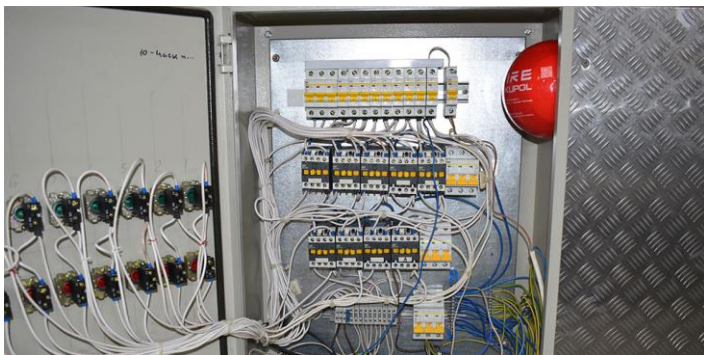


2. Secure the device with a double-sided adhesive tape on a flat and dry surface.



3. Upon contact with fire, the device automatically activates with a warning pop and sprays fire extinguishing powder onto the source of the fire.

■ FINFIRE "KUPOL" Installation



FINFIRE

+7-919-529-86-85

info@finfire.ru

www.finfire.ru

